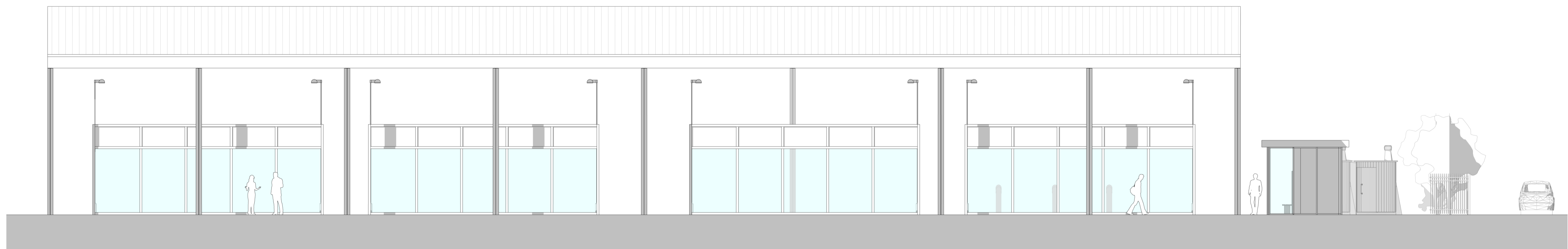
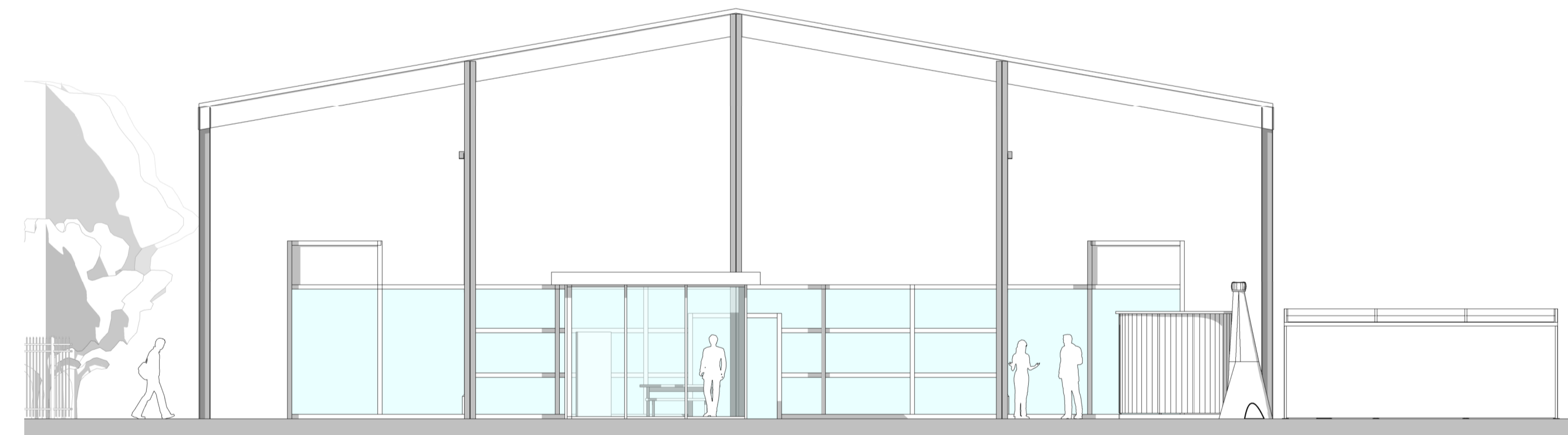


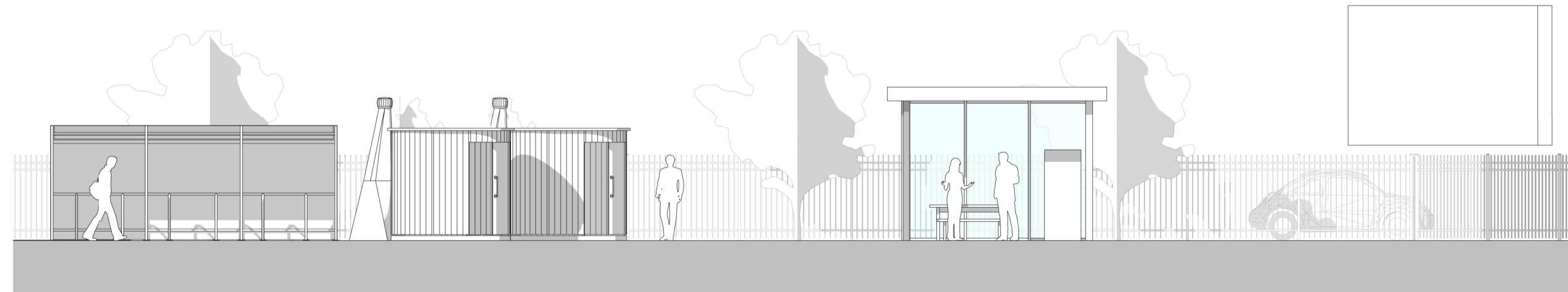
**1 South Elevation**  
1 : 100



**2 North Elevation**  
1 : 100



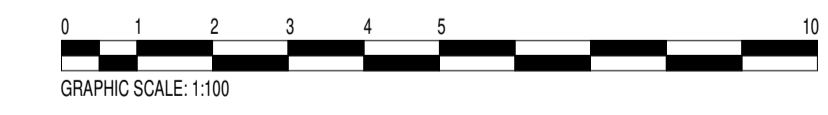
**3 West Elevation**  
1 : 100



**4 East Elevation**  
1 : 100

**KEY**

- 01 Steel portal frame canopy
- 02 Proprietary padel tennis courts including enclosure and lighting
- 03 Existing digital screen
- 04 Glazed kiosk including seating and welfare facilities
- 05 Proprietary timber clad WC pod
- 06 Proprietary timber clad cycle shelter
- 07 Existing trees
- 08 Existing palisade fence



REV	DATE	DESCRIPTION	BY
P2	10.09.2021	Roof detail added. Issued for Planning.	AW
P1	09.08.2021	Issued for Planning.	AW

ORIGINATOR	REF:
 <b>CPMG Architects Ltd</b> <i>People. Purpose. Place.</i>	
Nottingham 13 St. Peter's Gate, Nottingham, NG1 2JF 0115 958 9500 London 31.05 Kibby Street, London, EC1N 8TE 0207 492 1805 Birmingham The Level Building, Bull Street, Birmingham, B4 6EQ 0121 481 2092 enquires@cpmg-architects.com www.cpmg-architects.com	

PROJECT  
**Padel Tennis Courts**

DRAWING TITLE  
**EXTERNALS: General Arrangement  
GENERAL ARRANGEMENT ELEVATIONS  
GA ELEVATIONS**

DRAWING STATUS

**FOR PLANNING**

DRAWN BY	DATE	CHKD BY	SCALE	MEDIA
MP	2021-07-02	AW	As indicated	A1
PROJECT - ORIGINATOR - ZONE - LEVEL - TYPE - ROLE - NUMBER				REVISION
<b>9068-CPM-01-ZZ-DR-A-2010</b>				<b>P2</b>

Copyright of CPMG Architects Limited 2021. All rights reserved. No part of this publication may be reproduced, stored in any retrieval system or transmitted in any form or by any means without prior permission of CPMG Architects Limited. Do not scale from drawing, use figured dimensions only. All dimensions to be checked on site.  
ISO 9001:2015 Quality Management ISO 14001:2015 Environmental Management  
PAS 1192-2:2013 Building Information Modelling