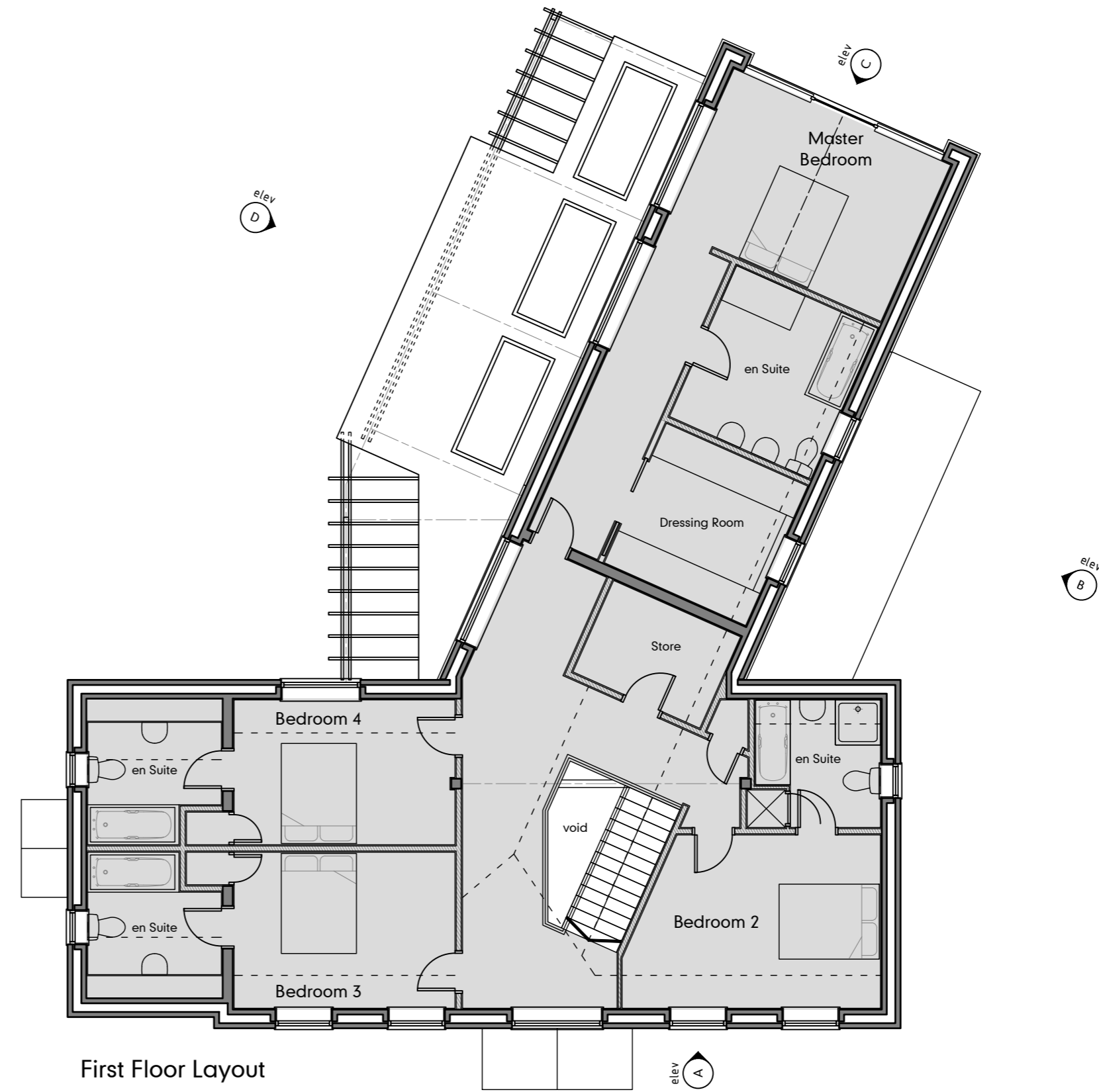
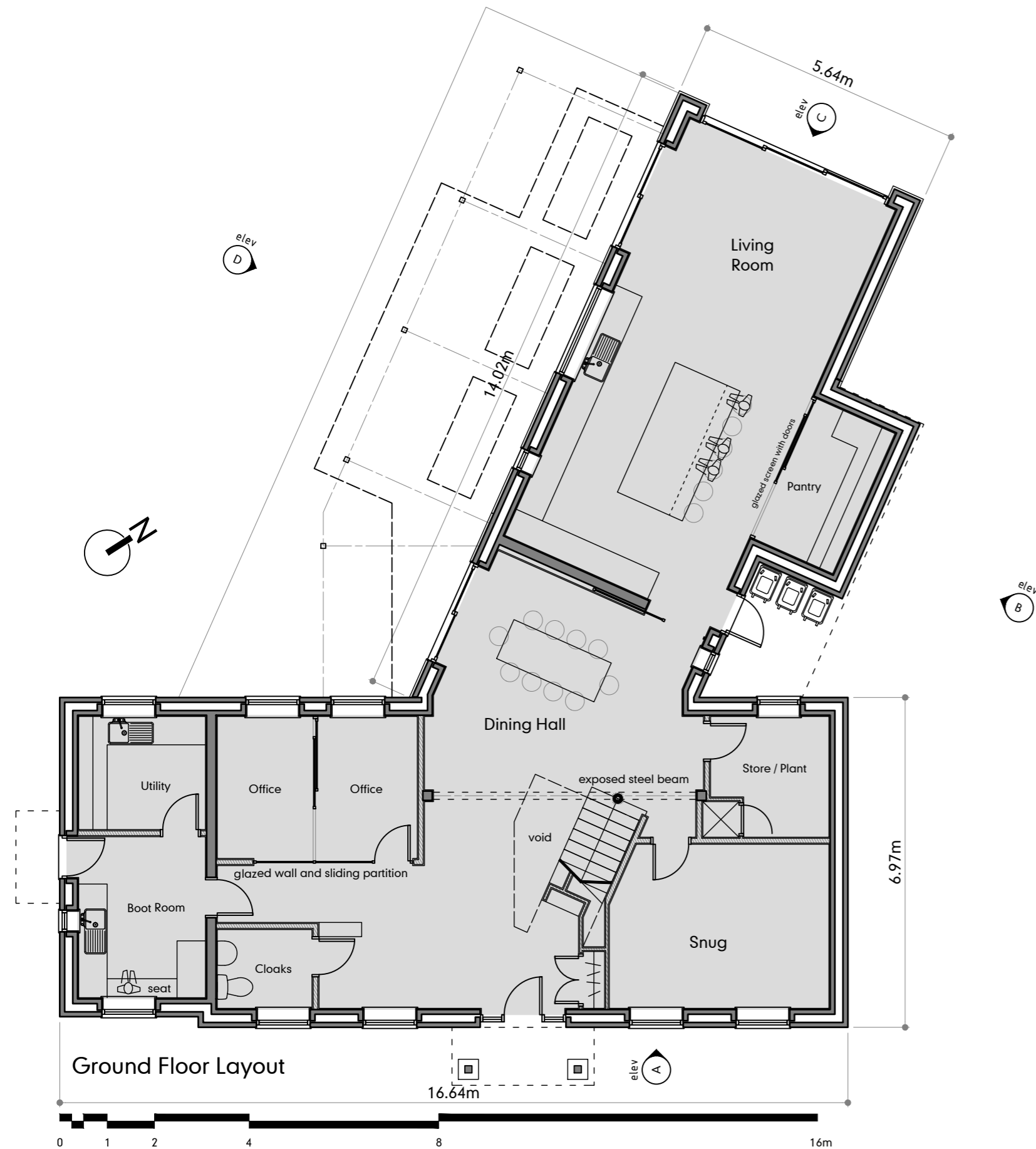


notes
 Do not scale from this drawing — use stated levels and dimensions only.
 If in doubt, contact Williams Architects Ltd.



.04	Layouts updated to suit revised front/main elevation	09oct23
.03	Rear bay reduced in size, canopy added to front entrance, interiors and terrace roof updated to suit	08sep23
.02	Scheme reworked for resubmission	21jun23
ver	notes	date

williamsarchitects

Williams-Architects Ltd
 Studio 8, The Garage Studios
 41-45 St Mary's Gate
 The Lace Market
 Nottingham NG1 1PU

0115 945 5691
 enquiries@williams-architects.co.uk
 www.williams-architects.co.uk
 Registered in England & Wales. N° 5096848

this drawing and its contents, on paper and as the originating data file, remain the copyright of Williams-Architects Ltd
 © Williams-Architects Ltd, 2023

client	J Palmer and J Howard	created	06dec22
project	New House, Hawksworth Road	job N°	220526
title	Layouts : Proposed	scale	1:100 @ A2