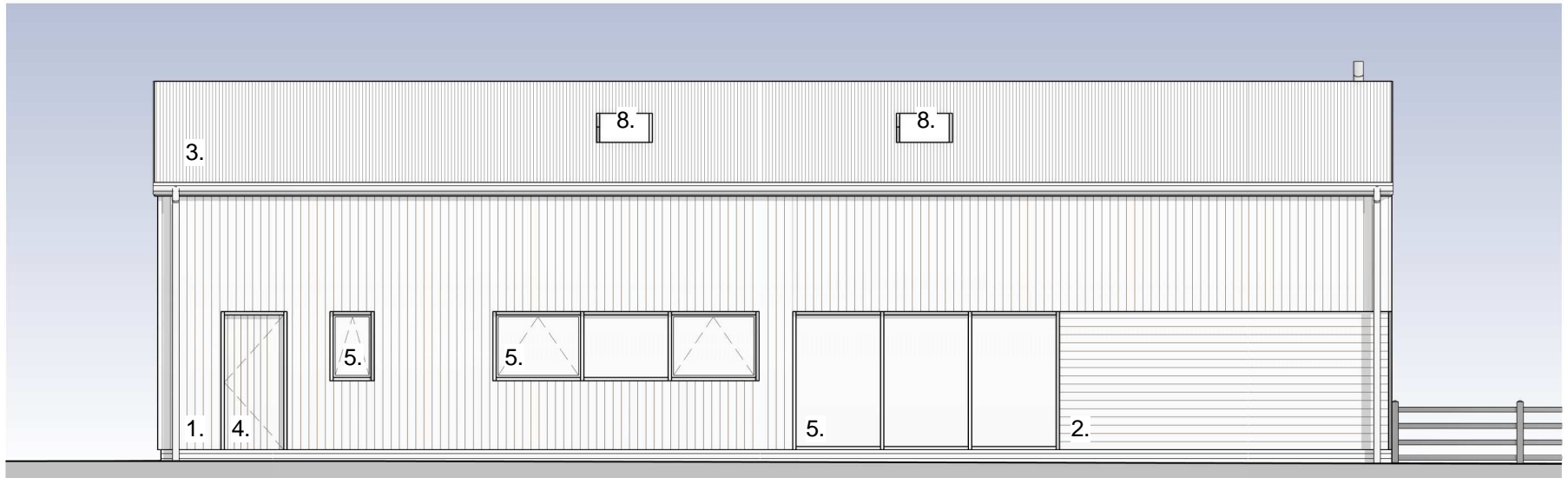


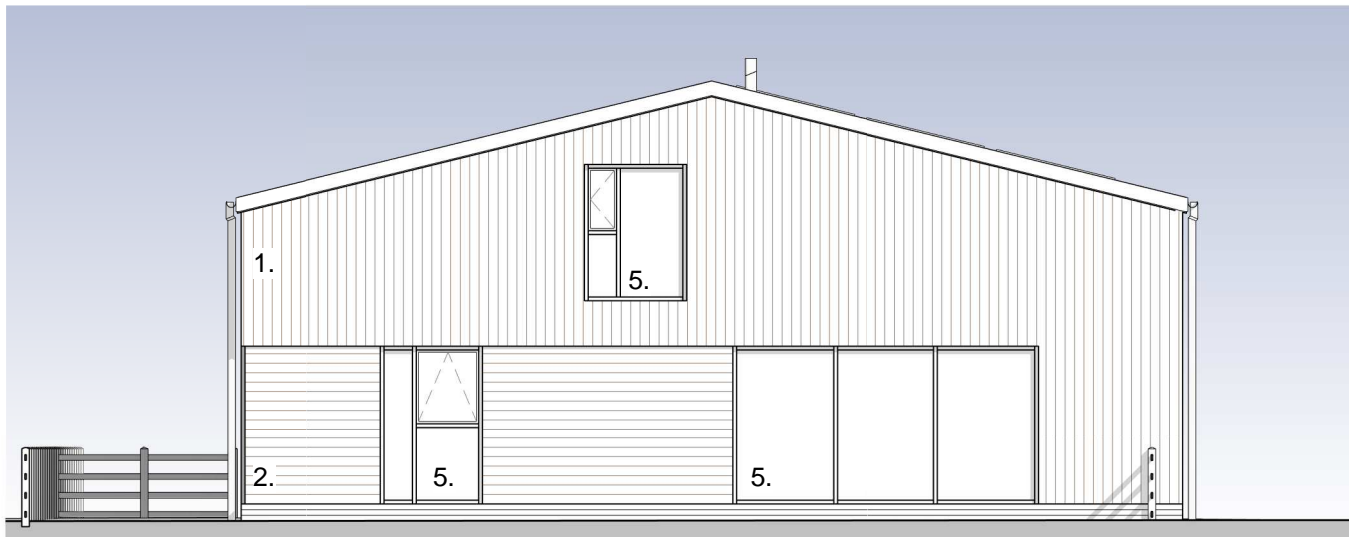
**Material Key**

- 1. Vertical timber cladding
- 2. Horizontal timber cladding
- 3. Corrugated/ seamed metal roof
- 4. Timber door
- 5. Aluminium windows with clear glazing
- 6. Aluminium windows with obscured glazing
- 7. Photovoltaic panels
- 8. Glazed rooflights
- 9. Metal flue to wood burner

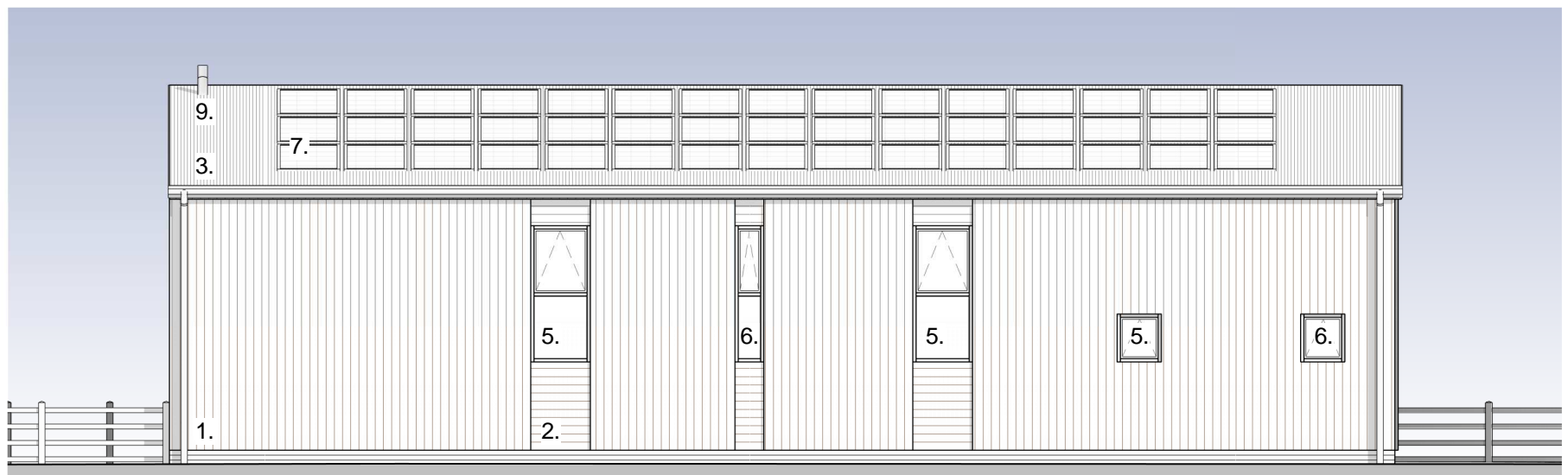
**1 Proposed East Elevation**  
1 : 100



**2 Proposed North Elevation**  
1 : 100



**3 Proposed West Elevation**  
1 : 100



**4 Proposed South Elevation**  
1 : 100